

Community Profiles for Scoring

2019 Request for Proposals and
2020 Housing Tax Credits

m MINNESOTA HOUSING

Minnesota Housing | mnhousing.gov

m MINNESOTA HOUSING

Our Mission

Housing is the foundation for success, so we collaborate with individuals, communities and partners to create, preserve and finance affordable housing.

April 2019 Minnesota Housing | mnhousing.gov 2

Agenda

TOPICS

- Goal
- Geographic Priority Areas
- Accessing Community Profiles
- Interactive Map
- Custom Report
- **NEW** Mapping Application for Scoring
- Walk Score

April 2019 Minnesota Housing | mnhousing.gov 3

Goal of Community Profiles

Create a **comprehensive** but **understandable tool** for Minnesota Housing staff and partners that will assist in the planning and funding process for affordable housing projects



April 2019 Minnesota Housing | mnhousing.gov 4

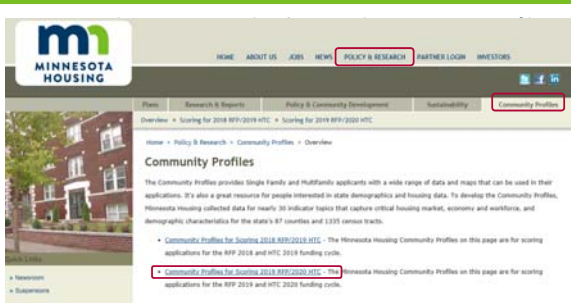
Geographic Priority Areas

Available in Community Profiles for 2019 RFP/2020 HTC

Economic Integration	Moderate to high income areas
Access to Higher Performing Schools	Areas with schools that meet or exceed two of three performance thresholds
Rural/Tribal Designation Areas	Areas outside the Twin Cities, seven-county metro and tracts in Duluth, Rochester and St. Cloud
Location Efficiency	Proximity to transit (Dial-a-Ride not shown)
Tribal Equivalent Areas	Reservations that meet HUD's QCT criteria
Workforce Housing	Cities with job growth, top job communities, or long commutes and 5 or 10 mile buffer
Community Recovery (Single Family)	Older housing stock, slower housing price recovery

April 2019 Minnesota Housing | mnhousing.gov 5

Accessing Community Profiles



April 2019 Minnesota Housing | mnhousing.gov 6

Accessing Community Profiles (continued)

www.mnhousing.gov > Policy & Research > Community Profiles

Community Profiles for Scoring in 2019 RFP/2020 HTC

The Minnesota Housing Community Profiles on this page are for scoring applications for the HTC 2020 and RFP 2019 funding cycle. In the Community Profiles, Minnesota Housing used 38 indicators to identify communities for housing need.

Notes: The promissory use of the 2010 light applicable of the state housing tax credit ceiling (1% HTC) were approved by the Governor in October 2018.

Learn About the Community Profiles

- Introduction to the Profiles
- Methodology
- Profile Profiles

Community Profiles Maps and Data

- Interactive map of profiles by block and census tract (NEW!)**
- Map Download
- Download Data Tables

Geographic Scoring Maps

- Multi-year Geographic Scoring Map (NEW!)**
- Map Download

Get Information for RFP Application

- Guidance for Challenge applicants
- Guidance for Single Family applicants
- Qualifier Contact Guide Checklist

April 2019 Minnesota Housing | mnhousing.gov 7

Interactive Map

Data Layers and Site Overlays Custom Region & Print

Search

The Map

Legend

April 2019 Minnesota Housing | mnhousing.gov 8

Interactive Map (continued)

Absolute Change in Households 2000-2016

402 Wabasha Street North, Saint Paul, MN 55112

Indicator	Value	Rank	Notes
Total Households	103,840	100th Percentile	Total low and moderate wage jobs within 5 miles of census tract in 2015
Median Household Income	37,500	100th Percentile	Median reported to work or other for workers in census tract in 2015
Unemployment Rate	3.7%	40th Percentile	Unemployment rate by City of Minneapolis February 2018

April 2019 Minnesota Housing | mnhousing.gov 9

Interactive Map (continued)

April 2019 Minnesota Housing | mnhousing.gov 10

Interactive Map (continued)

April 2019 Minnesota Housing | mnhousing.gov 11

Interactive Map (continued)

April 2019 Minnesota Housing | mnhousing.gov 12

Interactive Map (continued)

April 2019 Minnesota Housing | mnhousing.gov 13

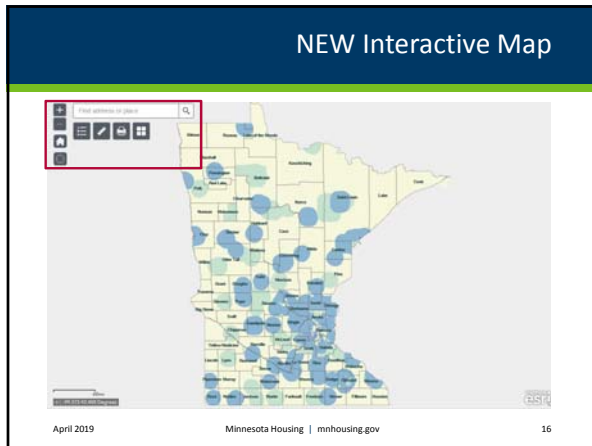
Interactive Map (continued)

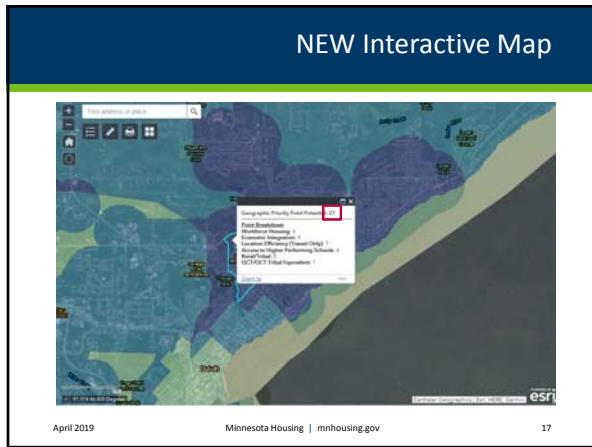
April 2019 Minnesota Housing | mnhousing.gov 14

Custom Report

Indicator	Value	Range
Total pop.	164,200	Range: 100,000 - 100,000
Population 18-64	100,000	Range: 100,000 - 100,000
Population 65+	70,000	Range: 70,000 - 70,000

April 2019 Minnesota Housing | mnhousing.gov 15









Thank you!

Contact:

Kody Thurnau
kody.thurnau@state.mn.us
651.215.5972

April 2019Minnesota Housing | mnhousing.gov19
