

2021 QAP - Economic Integration Methodology

Economic integration is defined by Minnesota Housing in two tiers based on median family income.

Communities are eligible for these points in the Twin Cities 7-County Metropolitan Area and areas in and around Duluth, St. Cloud, and Rochester. For applicants to be awarded 7 or 9 points for economic integration, the proposed housing needs to be located in a community (census tract) with the median family income meeting or exceeding the region's¹ 40th percentile for 7 points and 80th percentile for 9 points, based on data published in the American Community Survey (ACS) for 2017. For each region, the 40 percent of census tracts with the lowest incomes are excluded from receiving points.

This document includes maps of the census tracts that meet the two tiers of economic integration as well as a list of census tracts by county for each tier. Maps 1 and 2 display the census tracts that meet these criteria, and the corresponding tables show the median incomes needed to achieve the thresholds by region. In the maps we have identified racially/ethnically-concentrated areas of poverty (R/ECAPs), which are a census-tract based concept developed by HUD². As the maps show, R/ECAPs are not in areas eligible for economic integration points. Interactive tools will be made available for applicants and staff to map project locations and determine economic integration points through the community profiles at www.mnhousing.gov > Policy & Research > Community Profiles.

Areas outside the Twin Cities 7-County Metropolitan Area, Duluth, Rochester, and St. Cloud are not eligible for economic integration or school performance points, but they are eligible for 10 points under the Rural/Tribal Designated Areas.

First Tier Economic Integration – 9 Points

Meets or exceeds the 80th percentile of median family income for the region.

Second Tier Economic Integration – 7 Points

Meet or exceed the 40th percentile of median family income (but less than the 80th percentile) for the region.

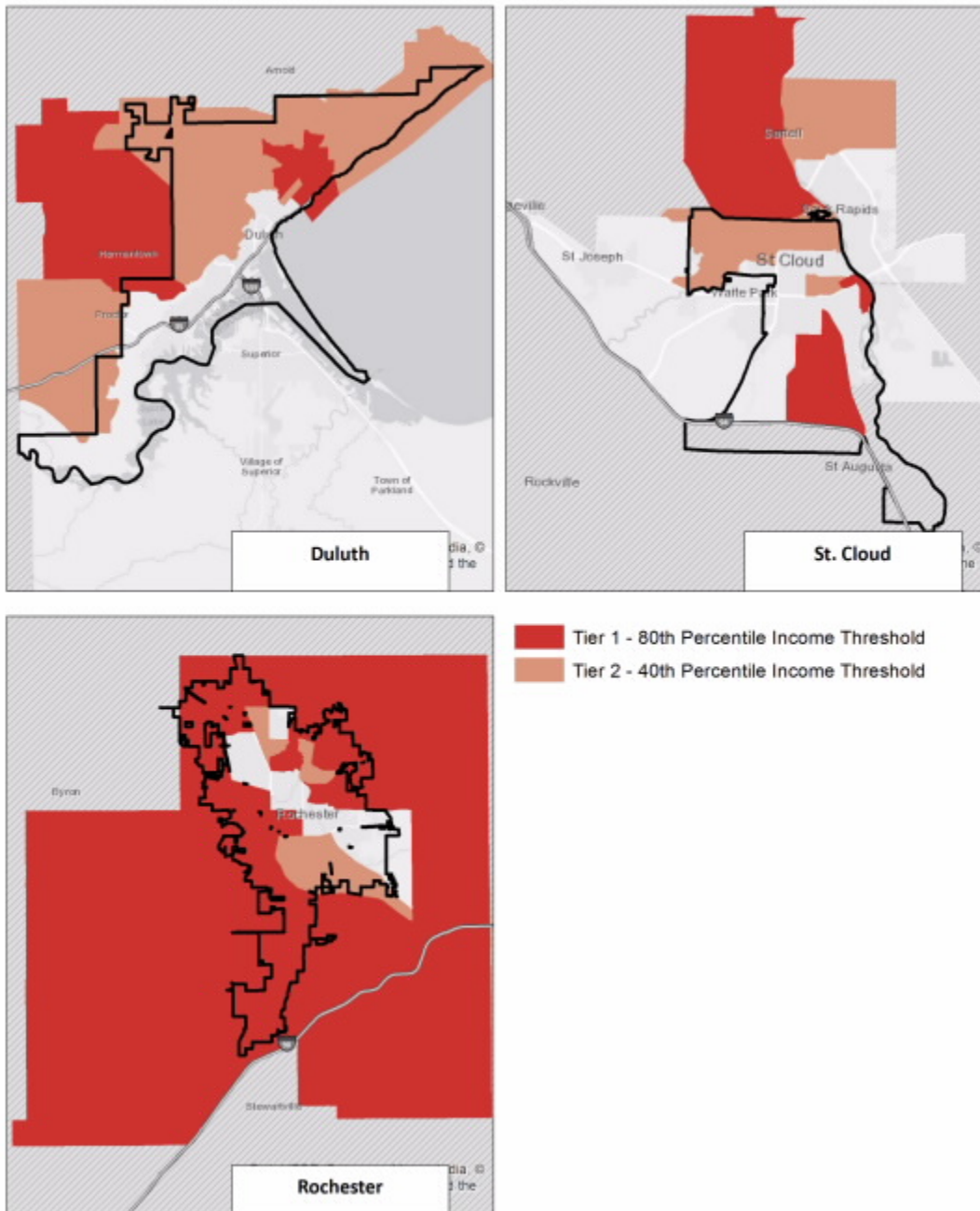
¹ For the purpose of assessing income by region, Minnesota Housing used three regional categories 1) Twin Cities 7-County Metropolitan Area, 2) Counties making up Greater Minnesota MSAs, including: Duluth, St. Cloud, Rochester and 3) Balance of Greater Minnesota. The purpose of the regional split is to acknowledge that incomes vary by region.

² R/ECAPs must have a non-white population of 50 percent or more and has a poverty rate that exceeds 40 percent or is three or more times the average tract poverty rate for the metropolitan/micropolitan area, whichever threshold is lower (http://hub.arcgis.com/datasets/56de4edea8264fe5a344da9811ef5d6e_0?selectedAttribute=RCAP_Current).

Table 1 – Median Family Income Thresholds by Region.

Economic Integration <i>(Twin Cities Metro on next page)</i>	Non Metro MSAs
Med Family Income / 40 th percentile	\$66,838
Med Family Income / 80 th percentile	\$85,625

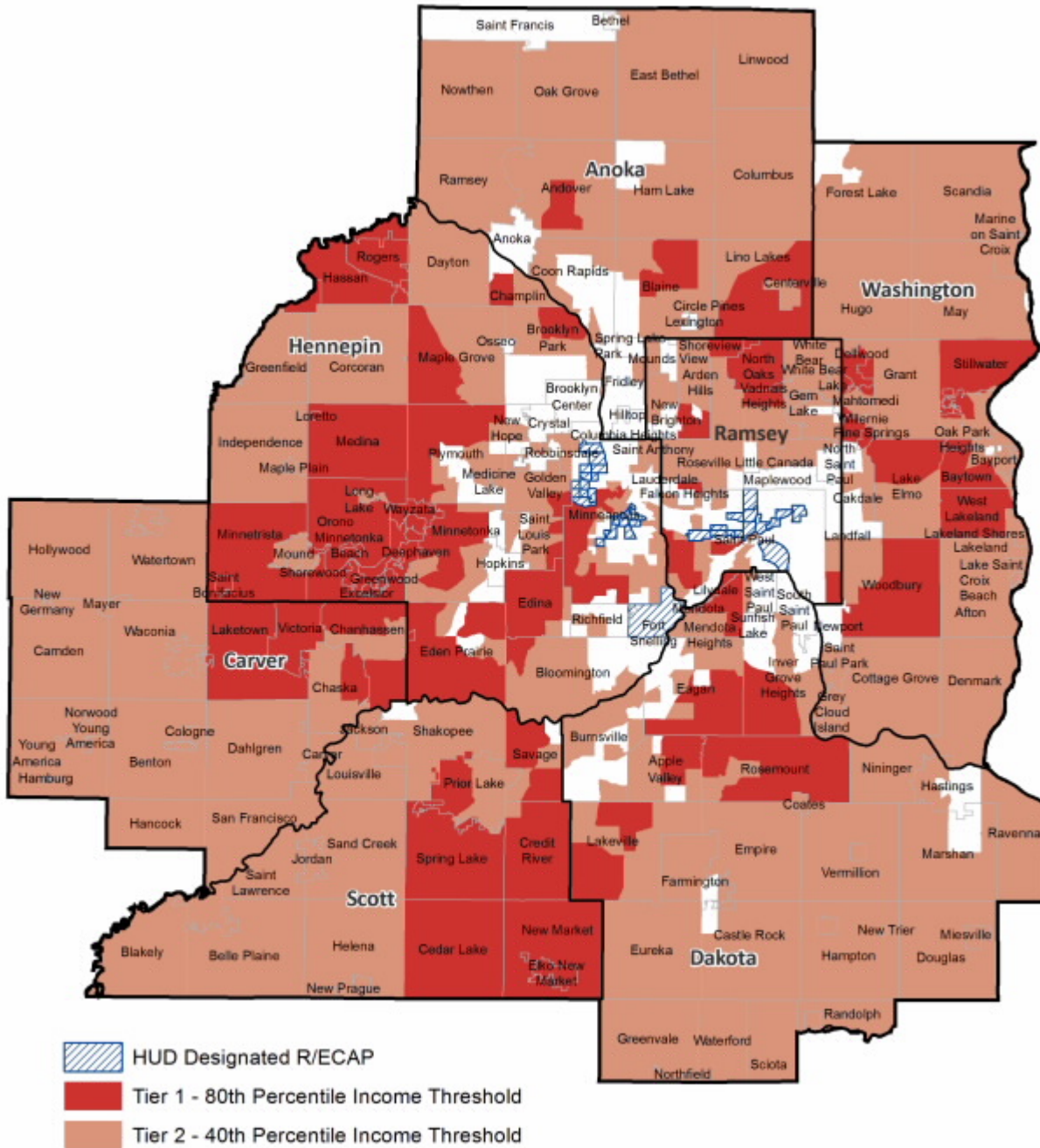
MAP 1 – CENSUS TRACTS MEETING REGION’S 40TH AND 80TH PERCENTILE THRESHOLDS FOR MEDIAN INCOME (OUTSIDE OF RURAL/TRIBAL AREAS)



MAP 2 – TWIN CITIES 7-COUNTY METROPOLITAN AREA DETAIL - CENSUS TRACTS MEETING REGION'S 40TH AND 80TH PERCENTILE THRESHOLDS FOR MEDIAN INCOME

Twin Cities 7-County Metropolitan Area

Med Family Income / 40 th percentile	\$82,108
Med Family Income / 80 th percentile	\$120,063



Census Tract Listing by County for Economic Integration

(* denotes tract achieves second tier)

Anoka		508.16	*	606.05	*	609.05	*
501.09	*	508.18		606.06		609.06	*
501.1	*	508.19		607.09	*	609.07	*
501.11	*	508.2	*	607.1	*	610.01	*
501.14	*	508.21		607.13	*	610.03	
501.15	*	509.02	*	607.14	*	610.04	
501.16	*	511.03	*	607.16	*	610.05	*
502.08	*	516	*	607.17	*	610.07	*
502.1	*	Benton		607.21	*	610.08	*
502.15	*	202.06	*	607.26	*	610.09	*
502.16	*	Carver		607.28		611.02	*
502.17	*	901	*	607.29		611.06	*
502.18	*	902	*	607.3		611.07	*
502.19	*	903.01	*	607.31		614.01	*
502.2		903.02	*	607.32		614.02	*
502.21	*	904.01		607.33	*	615.01	*
502.22	*	904.02		607.34		615.02	*
502.23	*	905.01		607.42	*	Hennepin	
502.24	*	905.02		607.44		3	*
502.25	*	905.03		607.48	*	6.03	*
502.26	*	906.01	*	608.06	*	81	*
502.27	*	906.02		608.11	*	106	
502.28	*	907.01	*	608.12	*	107	
502.29	*	907.02		608.13	*	110	*
502.3		908	*	608.14		117.03	
502.32	*	909		608.15	*	117.04	
502.33	*	910	*	608.16		118	*
502.34	*	911	*	608.17	*	119.98	*
502.36		912.01	*	608.18	*	120.01	
502.37		912.02	*	608.19		121.02	*
506.05	*	Dakota		608.2		201.01	*
506.09	*	601.02	*	608.21	*	201.02	*
506.1	*	601.03	*	608.22		209.02	*
507.07	*	605.06	*	608.23		211	*
507.09	*	605.07	*	608.24	*	212	*
507.11	*	605.08		608.25		214	*
508.05	*	605.09	*	608.26	*	215.03	*
508.06	*	606.03		608.28	*	215.05	*
508.13	*	606.04		609.02	*	216.01	*
216.02	*	258.03	*	266.13		1036	

217	*	258.05	*	267.06	*	1037	*
218		259.03	*	267.07	*	1044	
219	*	259.05		267.08	*	1051	
220	*	259.06	*	267.1	*	1052.01	*
221.01	*	259.07	*	267.11	*	1054	*
222	*	260.05	*	267.12	*	1055	
223.01	*	260.07		267.13	*	1056	*
224	*	260.13		267.14		1064	*
227	*	260.14		267.15		1065	
228.01		260.15		267.16		1066	
228.02	*	260.16		268.12	*	1067	*
229.01		260.18		268.15	*	1076	*
229.02		260.2	*	268.2		1080	
230	*	260.21		268.22	*	1089	*
231		260.22		268.23	*	1090	*
235.01		261.01	*	269.06	*	1091	
235.02		261.03	*	269.07		1093	*
236		262.01	*	269.08	*	1098	
237		262.02		269.09		1099	*
238.01		262.05		269.1	*	1102	*
238.02	*	262.06		270.01	*	1105	*
239.01		262.07	*	270.02	*	1108	*
239.02		262.08	*	271.01		1109	*
239.03		263.01		271.02	*	1111	*
240.03	*	263.02		272.01		1112	
240.05	*	264.03	*	272.02	*	1113	
240.06		264.04		272.03		1114	
242	*	265.05	*	273		1115	
245	*	265.08		274		1116	
246	*	265.09		275.01		1225	*
253.01	*	265.1	*	275.03		1226	*
256.01	*	265.12	*	275.04		1256	*
256.03	*	266.05		276.01	*	1261	*
256.05	*	266.06		276.02	*	1262	
257.01	*	266.09	*	277		Olmsted	
257.02	*	266.1		1012	*	4	
258.01	*	266.11	*	1019	*	9.02	*
258.02	*	266.12		1030	*	9.03	

10	*
11	*
12.01	

370	*
375	
376.01	*

429	
430	
Scott	

9.01	*
10.01	*
101.01	

12.02		401	*	802.01		101.02	
12.03		402	*	802.02		116	
13.01		403.01	*	802.03	*	Washington	
13.02		404.01	*	802.04	*	701.05	*
14.02		404.02	*	802.05		701.06	*
15.01	*	405.02	*	803.01	*	702.03	*
15.02		405.03	*	803.02	*	702.04	*
15.03		405.04	*	806	*	702.05	*
16.01	*	406.01		807	*	702.06	*
16.02		406.03		808	*	703.01	
16.03		406.04	*	809.03		703.03	
17.01	*	407.03	*	809.04	*	703.04	*
17.03		407.04	*	809.05	*	704.03	*
22		407.05	*	809.06	*	704.04	
23		407.06		810		704.05	
Ramsey		407.07	*	811		704.06	*
301	*	408.01	*	812	*	705.01	
302.01	*	408.03		813	*	705.02	*
303	*	410.01	*	St. Louis		706.01	*
321	*	410.02	*	1	*	706.02	*
322	*	411.04	*	2	*	707.01	
333	*	411.05	*	3	*	707.03	*
342.02	*	411.06	*	4	*	707.04	*
349		413.01	*	5		709.06	*
350		413.02	*	6	*	709.09	*
351		414	*	7		710.01	*
352	*	415	*	10	*	710.06	*
353	*	416.01	*	11		710.1	
355	*	417	*	23	*	710.11	
357		418	*	101	*	710.12	*
358		419		102	*	710.13	*
360	*	421.02	*	103		710.14	
363		423.01	*	157		710.15	
364		424.01	*	Stearns		710.16	
365	*	425.03		4.02		710.17	
366	*	425.04	*	6.02	*	710.18	

711.01	*
711.02	*
712.06	*
712.07	*
712.08	*

712.09	*
713	*
714	*